

Procedimentos na Estação para Instalar e Utilizar Suporte Remoto

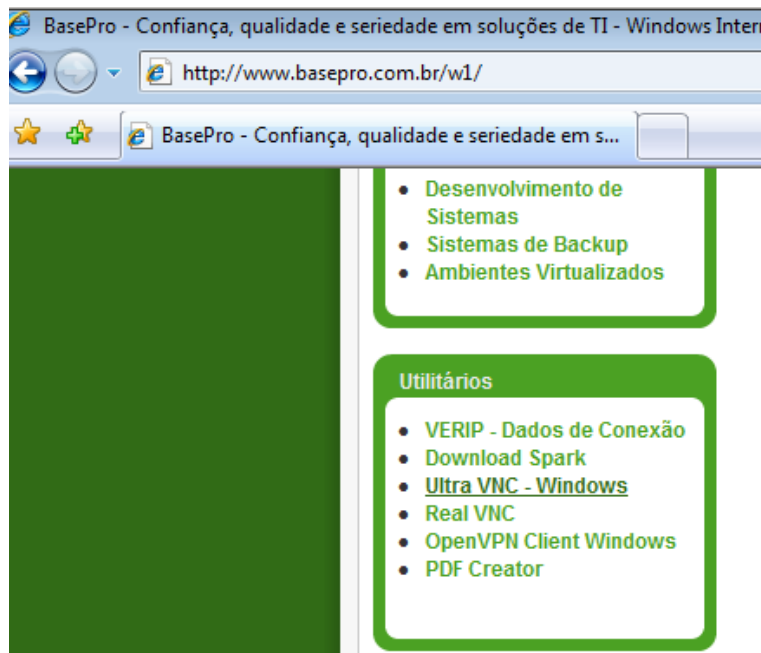
Ultra VNC é uma distribuição do software livre VNC (Virtual Network Computer) que possibilita assistência remota a um computador. Este documento é voltado para os usuários que necessitam instalar e configurar o VNC para obter a assistência remota.

Índice

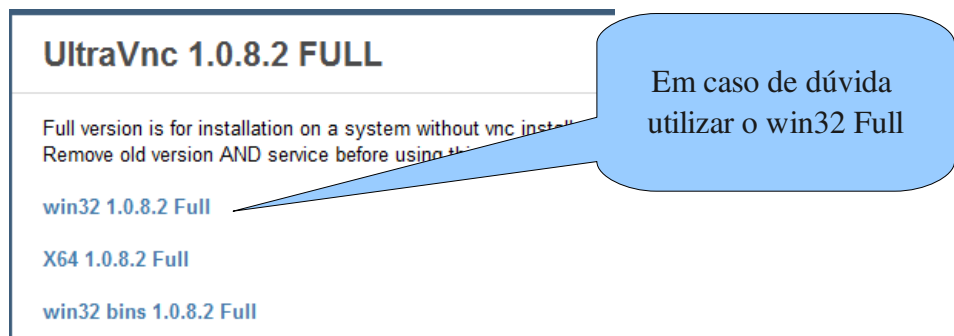
1 – Instalação do UltraVNC.....	2
2 – Ativando a primeira vez e configurando a senha.....	8
3 – Conectando ao Suporte Remoto.....	9
4 – Desconectando do Suporte Remoto.....	10

1 – Instalação do UltraVNC

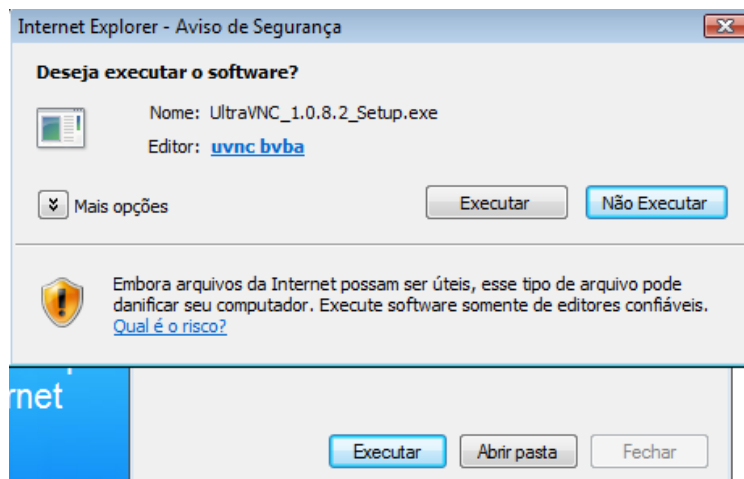
Baixar arquivo de instalação, no WebSite <http://www.basepro.com.br/> na área de utilitários localizar o link Ultra VNC – Windows ou utilizar arquivo fornecido pelo suporte.



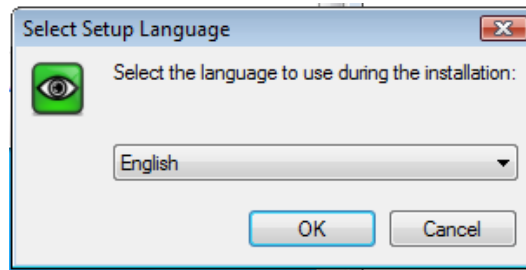
Selecionar a opção para seu sistema operacional.



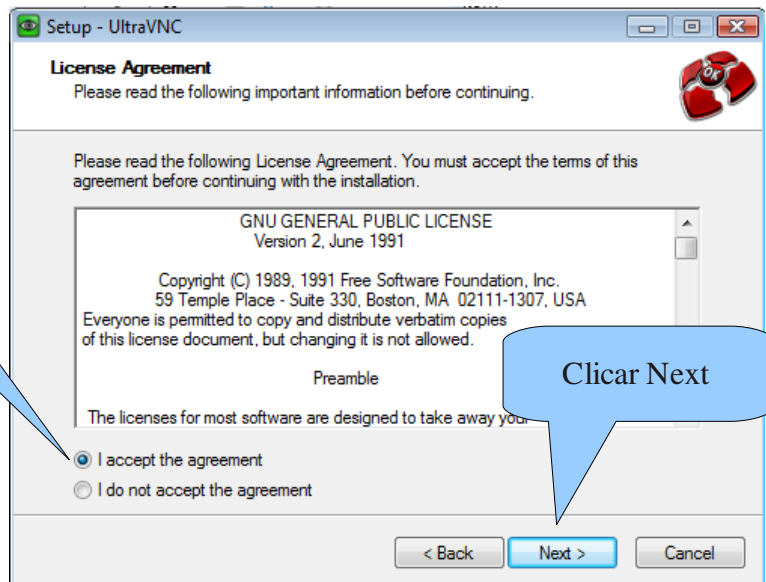
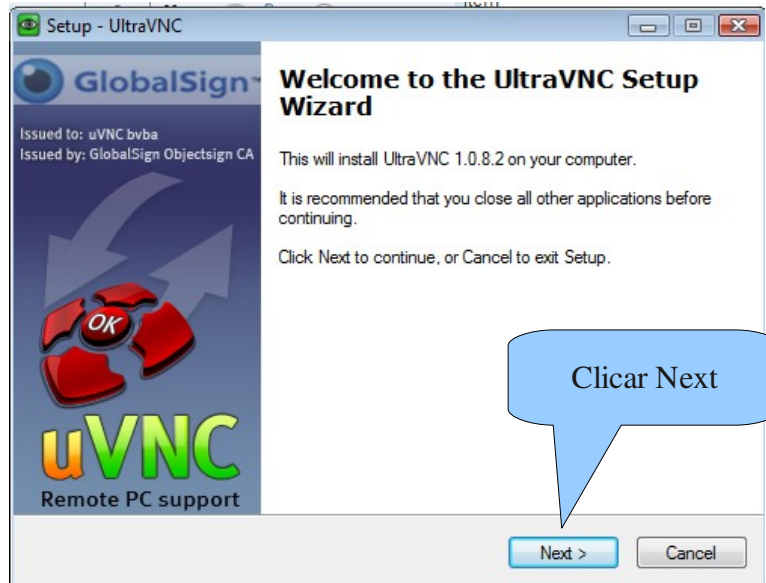
Clicar em Salvar e Executar

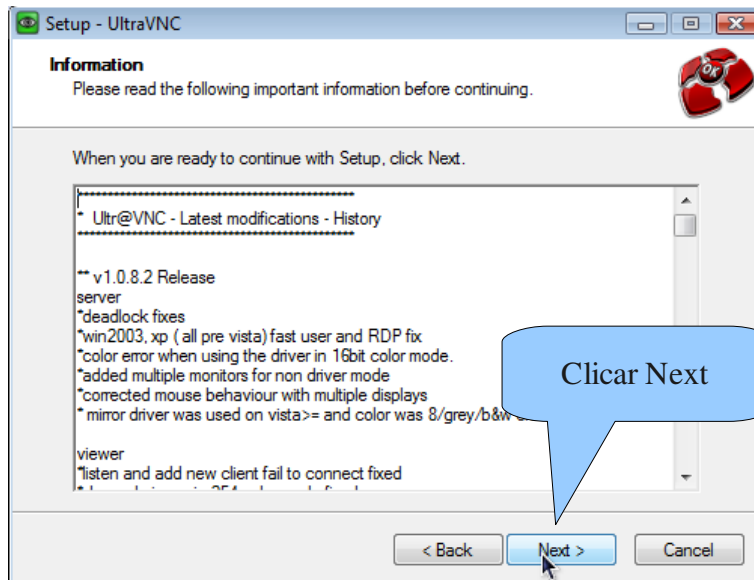
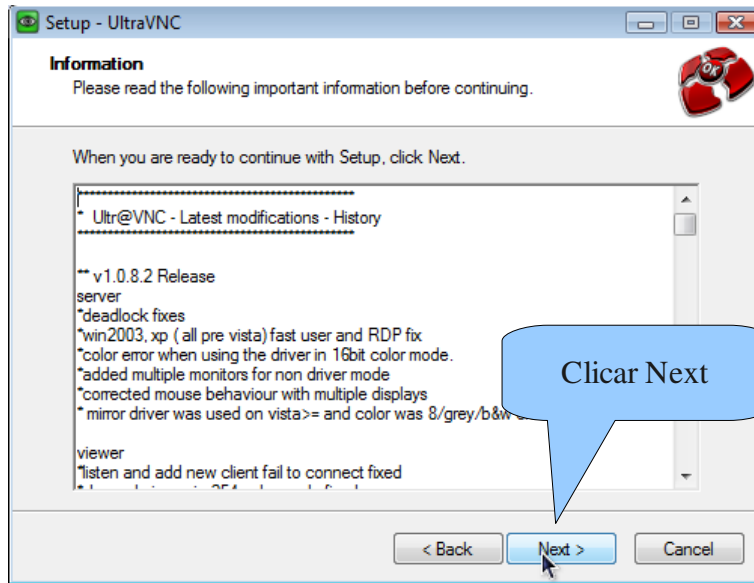


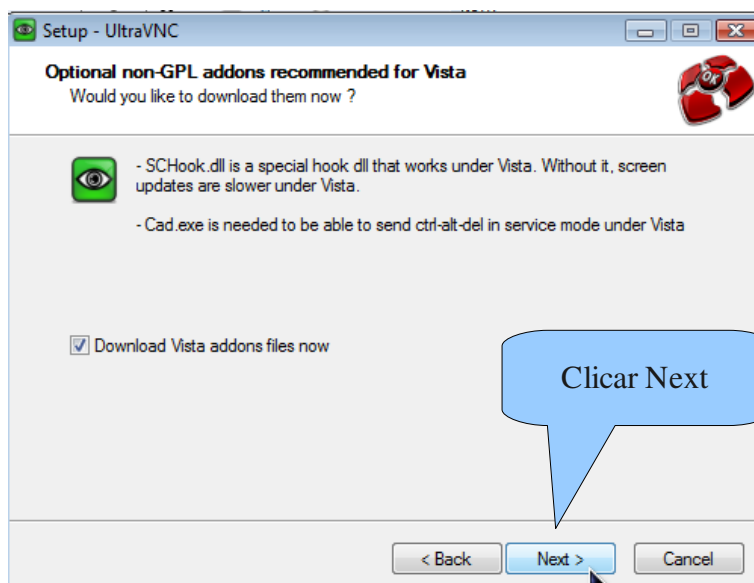
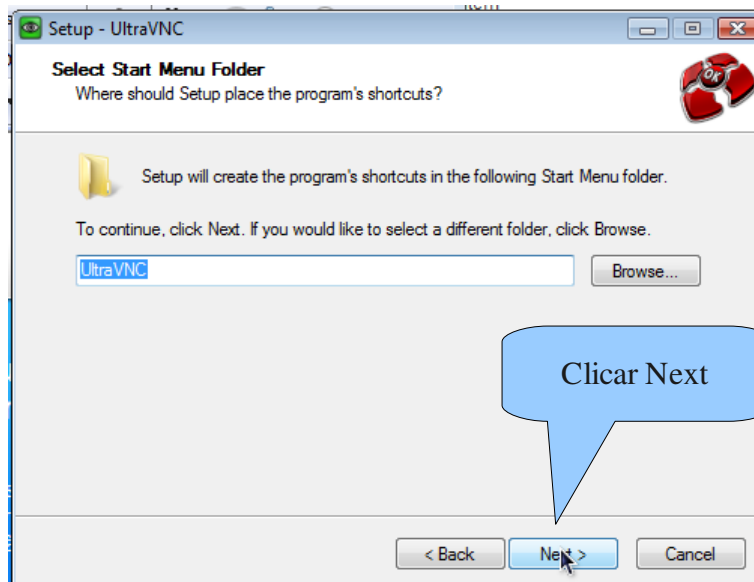
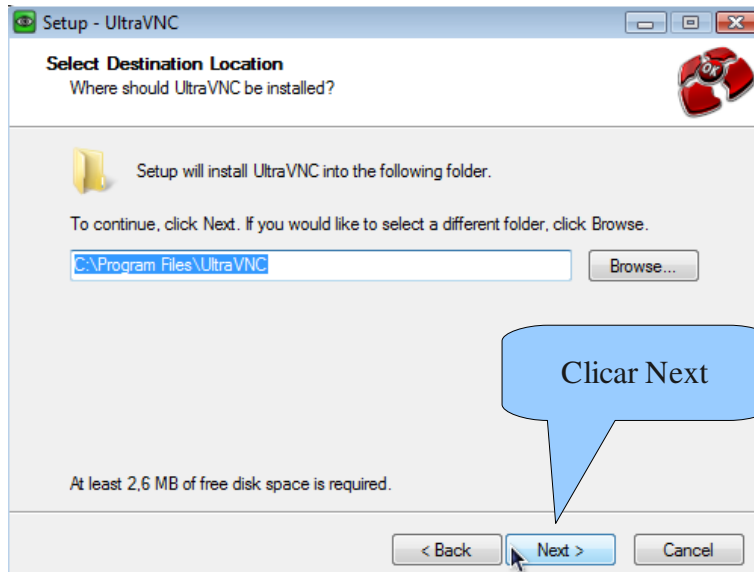
Selecionar linguagem, pressionar OK.

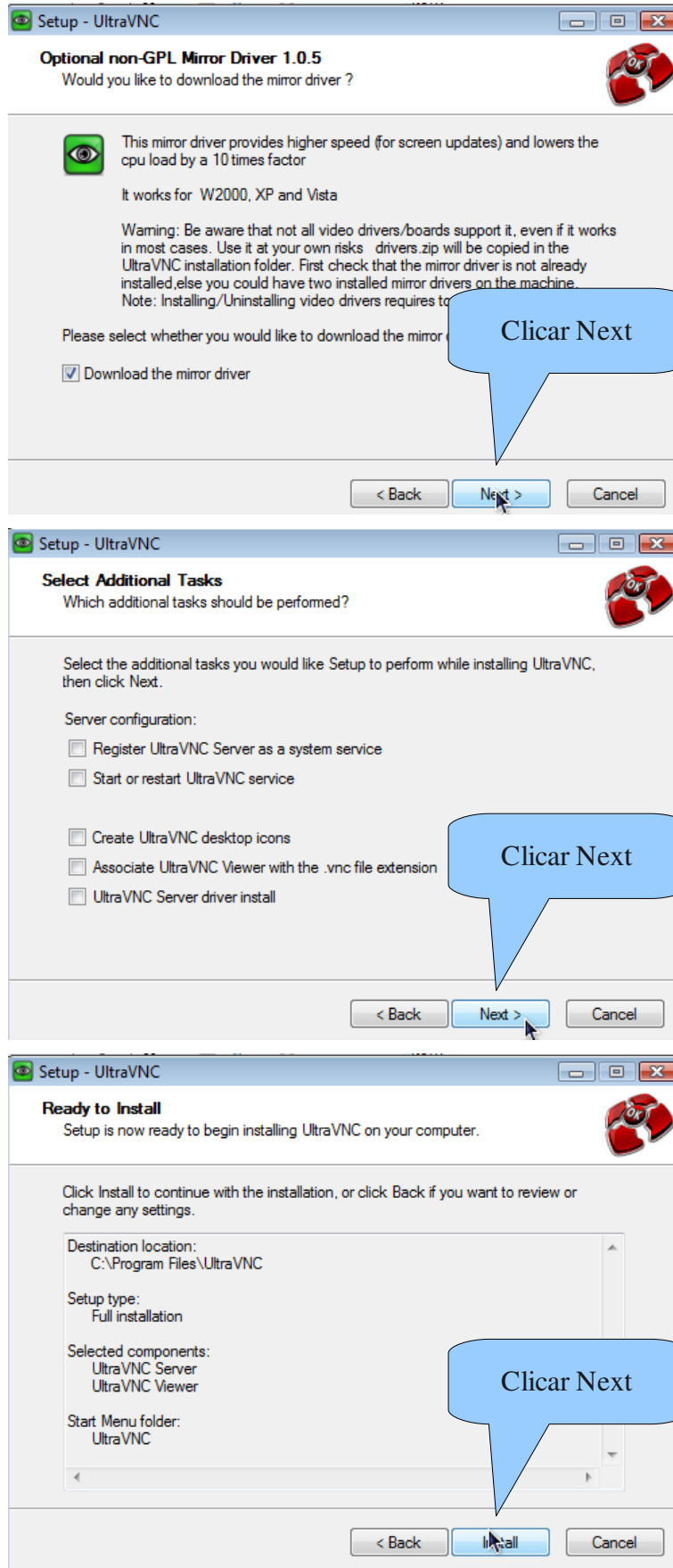


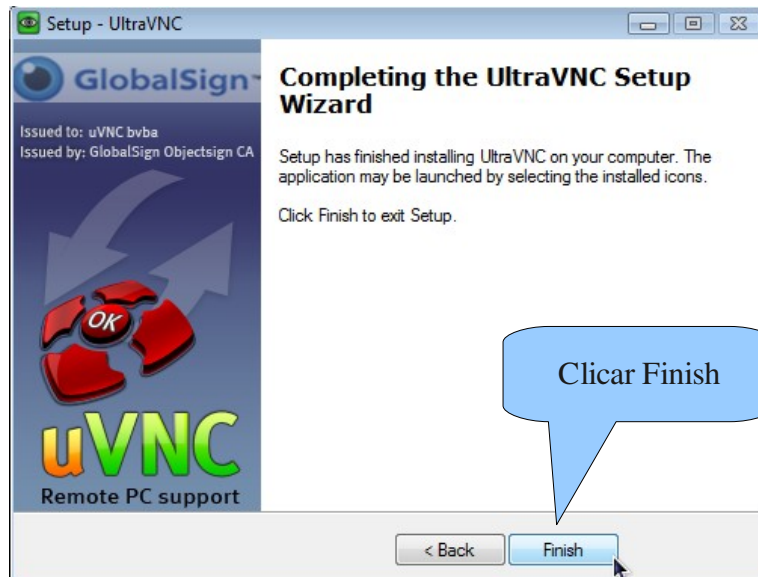
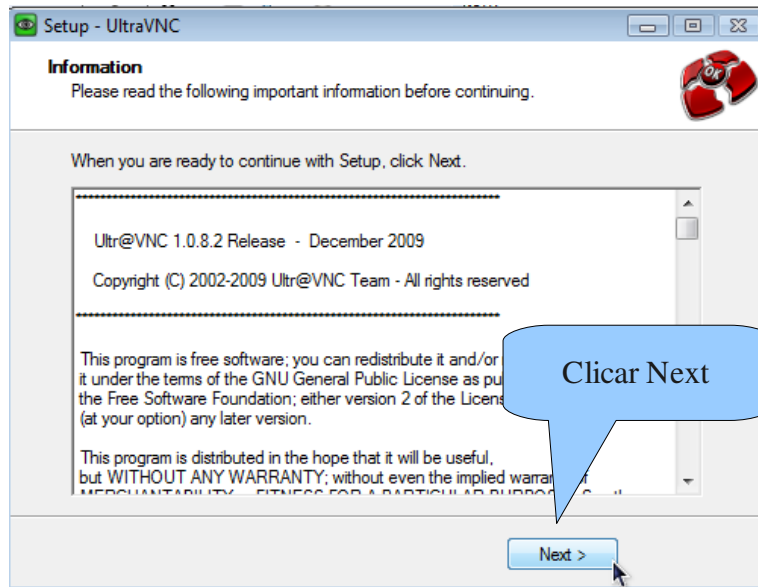
Clicar Next





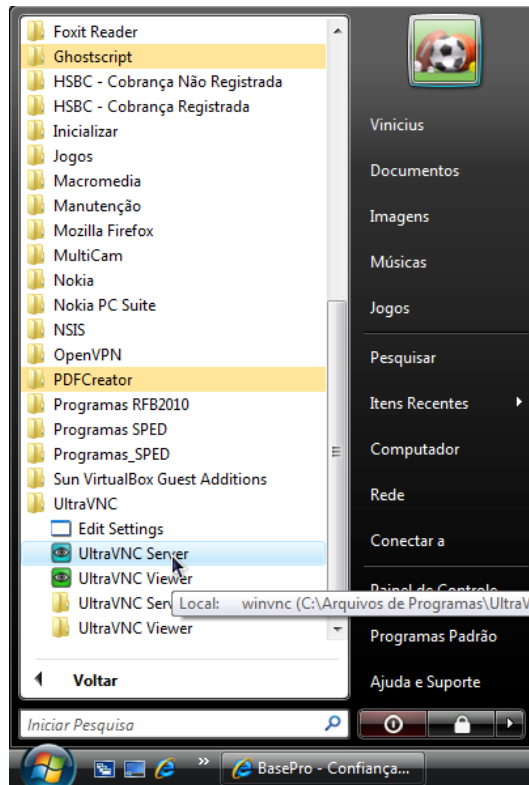




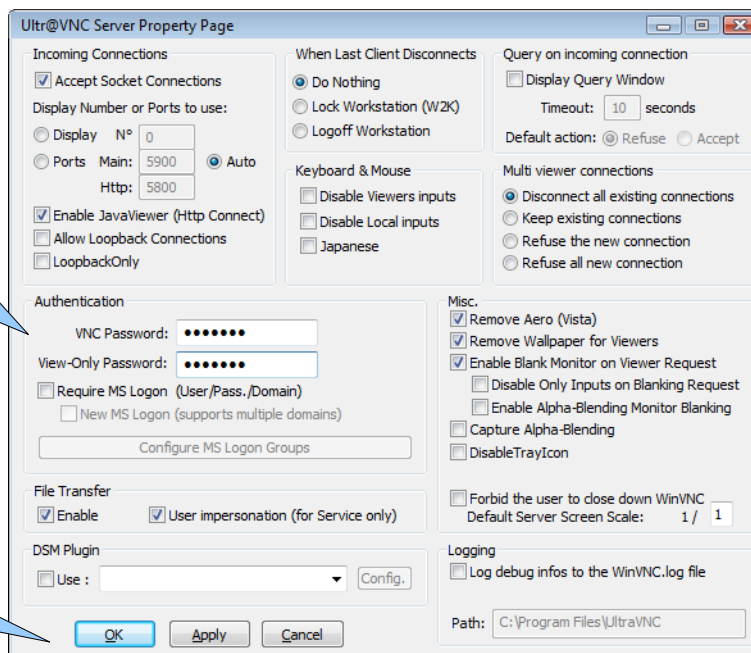


2 – Ativando a primeira vez e configurando a senha

Acessar:
Menu Iniciar >
Todos os Programas
UltraVNC
UltraVNC Server



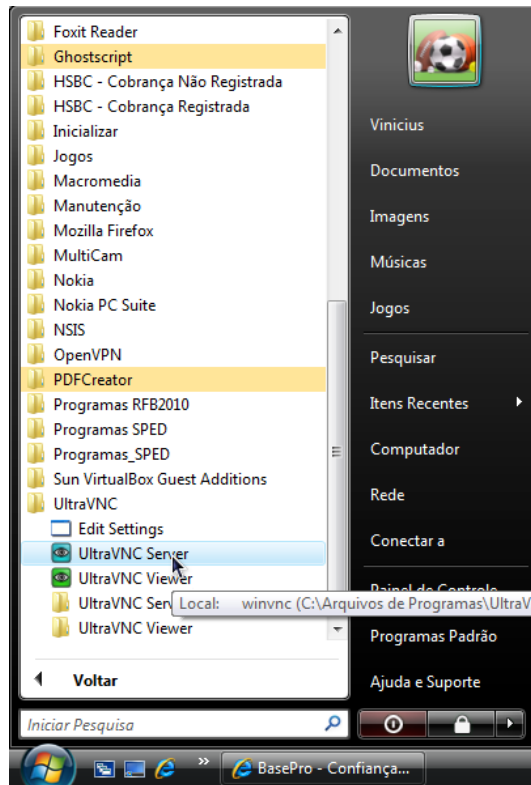
Definir uma senha
em VNC Password



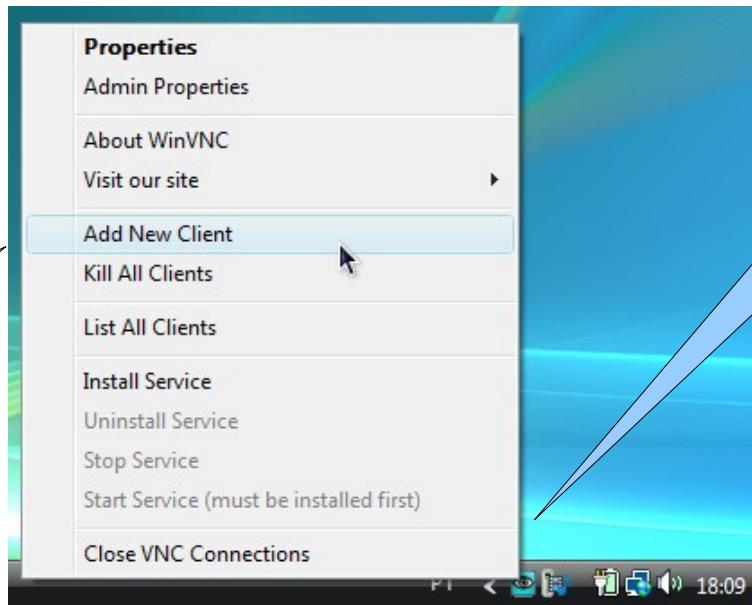
Pressionar OK

3 – Conectando ao Suporte Remoto

Acessar:
Menu Iniciar>
Todos os Programas
UltraVNC
UltraVNC Server

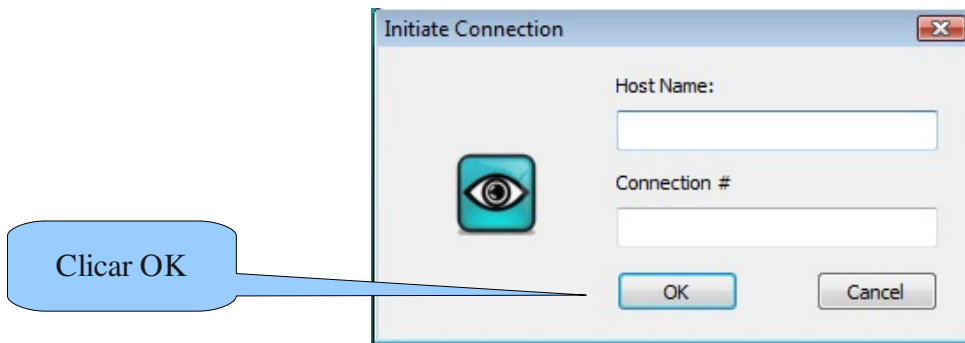


Selecionar opção
Add New Client



1 -Clicar com o
botão direito do
mouse no ícone do
UltraVNC Server.

Informar dados de
Host Name e Connection
informados pelo suporte.



4 – Desconectando do Suporte Remoto

